

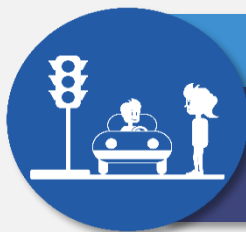


Sanofi life saving rules



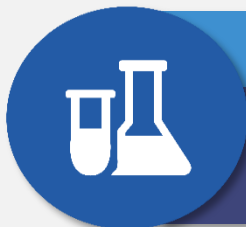
ACT RESPONSIBLY

Safe behaviors can save lives, including my own



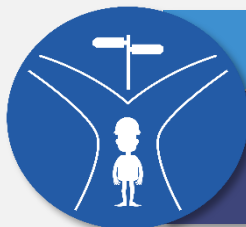
DRIVING AND WALKING

Be focused while driving and walking



WORK WITH CHEMICALS/BIOLOGICALS

Consider the hazards and manage the risk before starting work



WORK WHEN CONDITIONS CHANGE

All changes are risk assessed and approved



FIRE AND EXPLOSION

Control ignition sources



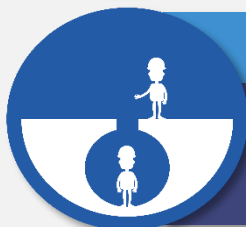
WORK ON ENERGIZED SYSTEMS

Isolate and lock all hazardous energies before working



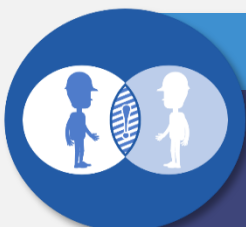
WORK AT HEIGHT

Use fall prevention systems



WORK IN CONFINED SPACES

Isolate hazards sources and control atmosphere before entering



WORK WITH CO-ACTIVITY

Analyze the impact of simultaneous operations



WORK WITH ELEVATED LOADS

Prevent the fall of a lifted load or tilt of a transported load